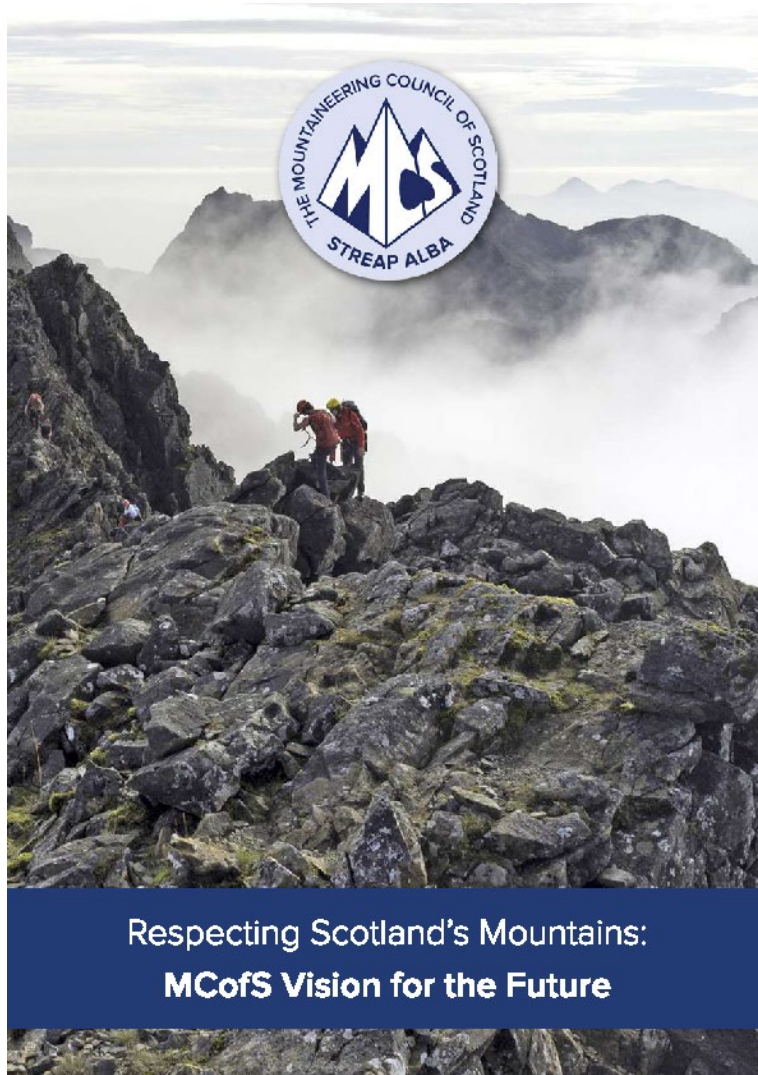


# Protecting: Access and Environment



# Manifesto for the Mountains



Respecting Scotland's Mountains - 2016

*Reviewed and updated to include:*

- Surveys of members' opinions
- Changing public policy and land use aims
- Increasing popularity of visiting the hills
- Mountaineering Scotland strategic priorities

## Access - parking



**Access –  
wildlife disturbance**



**Access –  
Deer stalking**



## Environment – Forestry & fences



## Environment – Natural regeneration



## Environment – Fences and access





## Development – Construction tracks



**Development –  
Large scale projects**

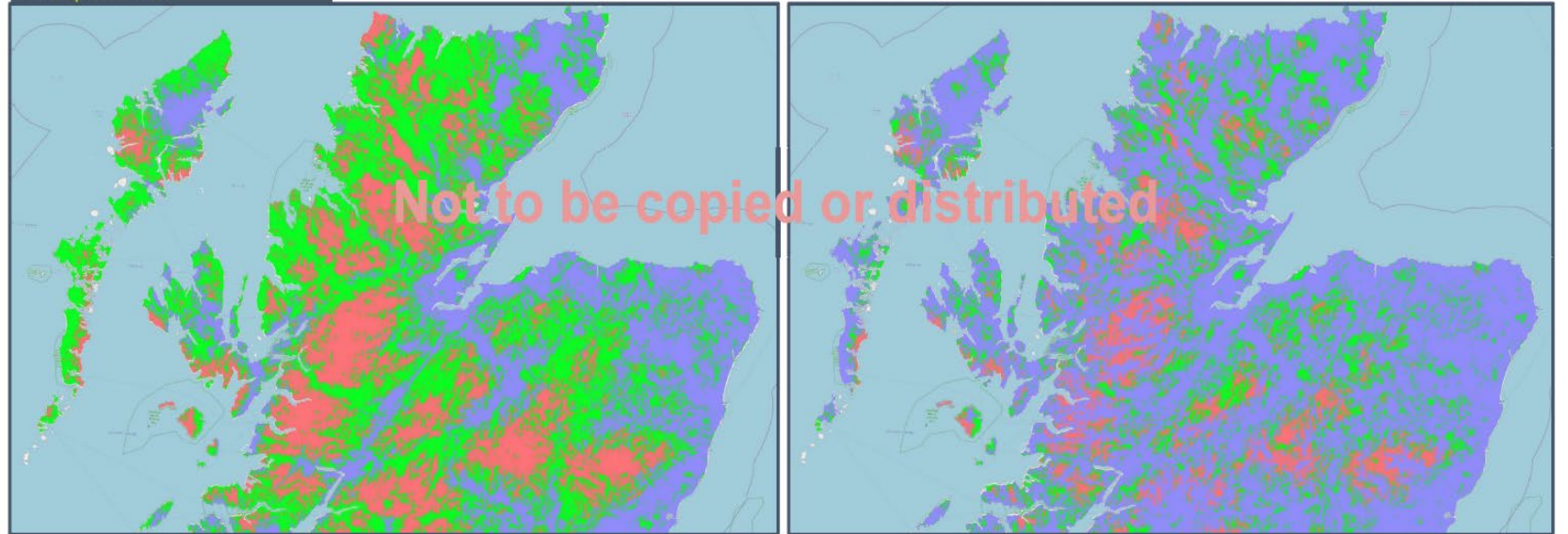



## National coverage uplift maps

Not to be copied or distributed

Development –  
Widespread  
Shared Rural Network

Pre/Post SRN  
Comparaison



 Coverage from all MNOs

 Partial Not Spots

 Total Not Spots





**STEP UP TO SAVE OUR  
MOUNTAIN PATHS**

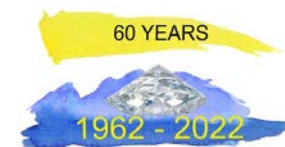


**MOUNTAINEERING  
SCOTLAND**  
WALK CLIMB SKI



**Outdoor  
Access Trust  
for Scotland**

Supported by:

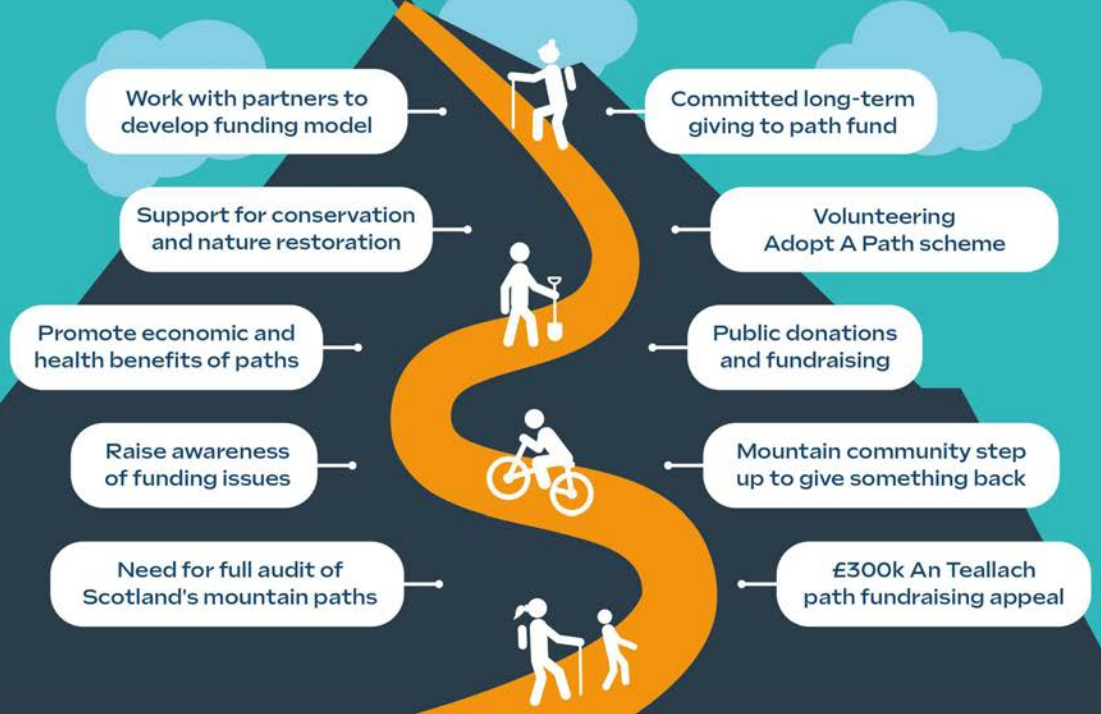






STEP UP TO SAVE OUR MOUNTAIN PATHS

# LONG TERM SUSTAINABLE FUND FOR SCOTLAND'S MOUNTAIN PATHS



IMPACT OF EXTREME WEATHER DUE TO CLIMATE CHANGE

INCREASING POPULARITY OF SCOTLAND'S MOUNTAINS

LACK OF FUNDING FOR PATH REPAIRS ON PRIVATE LAND

*It's Up to Us* is a campaign by Mountaineering Scotland and Outdoor Access Trust for Scotland to highlight the desperate need for long term public funding for upland path projects

## OUR AIMS

Engage with the hill and mountain community to raise funds for projects, initially £300k to repair An Teallach path

Raise awareness of the challenges land managers face in securing funding for path repair and maintenance for paths on privately owned land and the need for sustainable investment

Work with stakeholders and Government to develop a long-term model of funding for upland paths

Help us raise

# £300,000

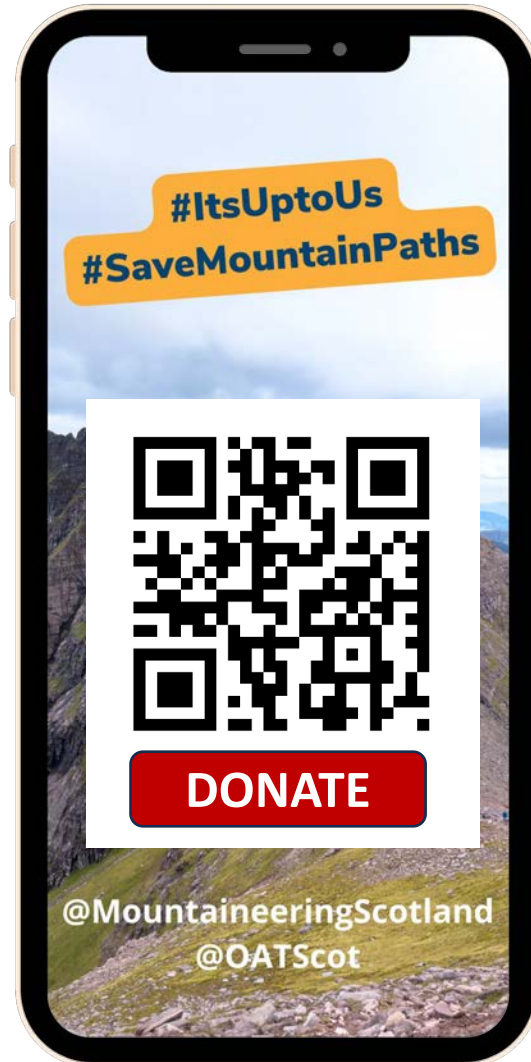
Donate

# How you can help

**DONATE ££**

**FUNDRAISE ££**

**ADOPT-A-PATH**



**STEP UP TO SAVE OUR  
MOUNTAIN PATHS**

[savemountainpaths.scot](https://savemountainpaths.scot)

# Thanks to our donors...



## Clubs:

- Kirkintilloch Hill Walking Club
- Lothian Teachers Mountaineering Club
- Glasgow Glenmore Club
- Stirling Hill Walking Club
- Cairngorm Club

## Corporate:

- Cotswold Outdoor
- Arnold Clark
- Summit Stride
- Forest Way Bunkhouse
- Jack Harland
- Big Sky Campers



# Mountaineering Scotland

AGM 2023

Protecting our Mountains –  
some current issues

Bob Reid (SMC)



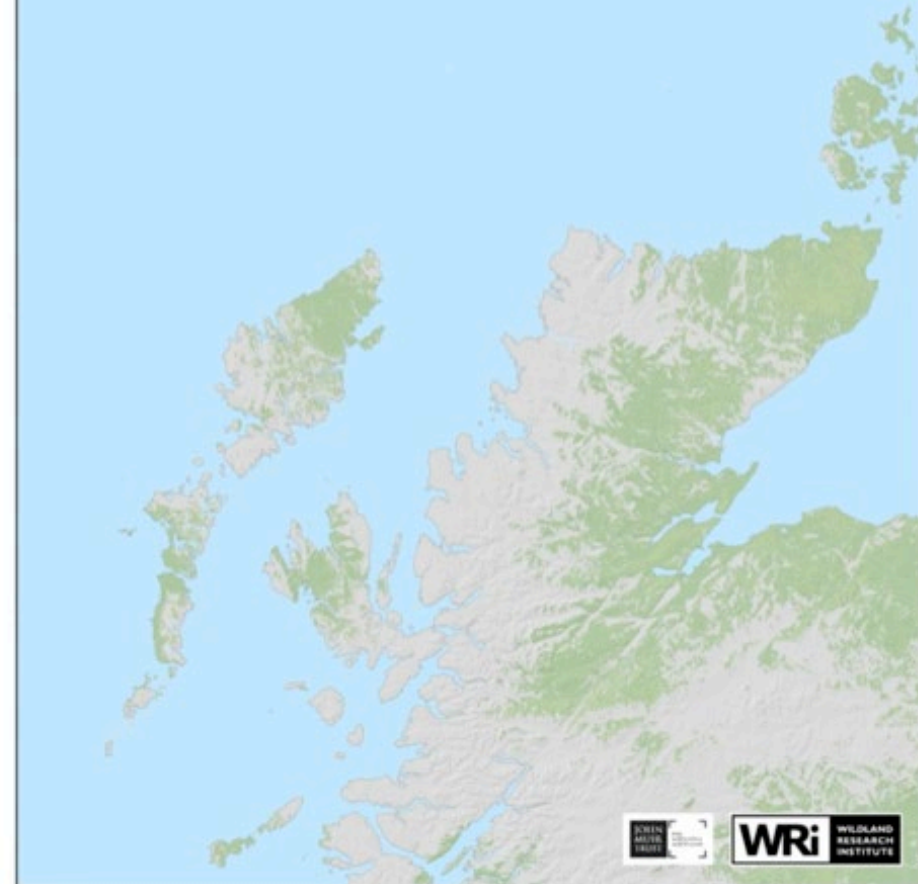




# Windfarms Spreading across Scotland

## The spread of wind farms and their visual impact across Scotland over time

1995-2018  
An Animation



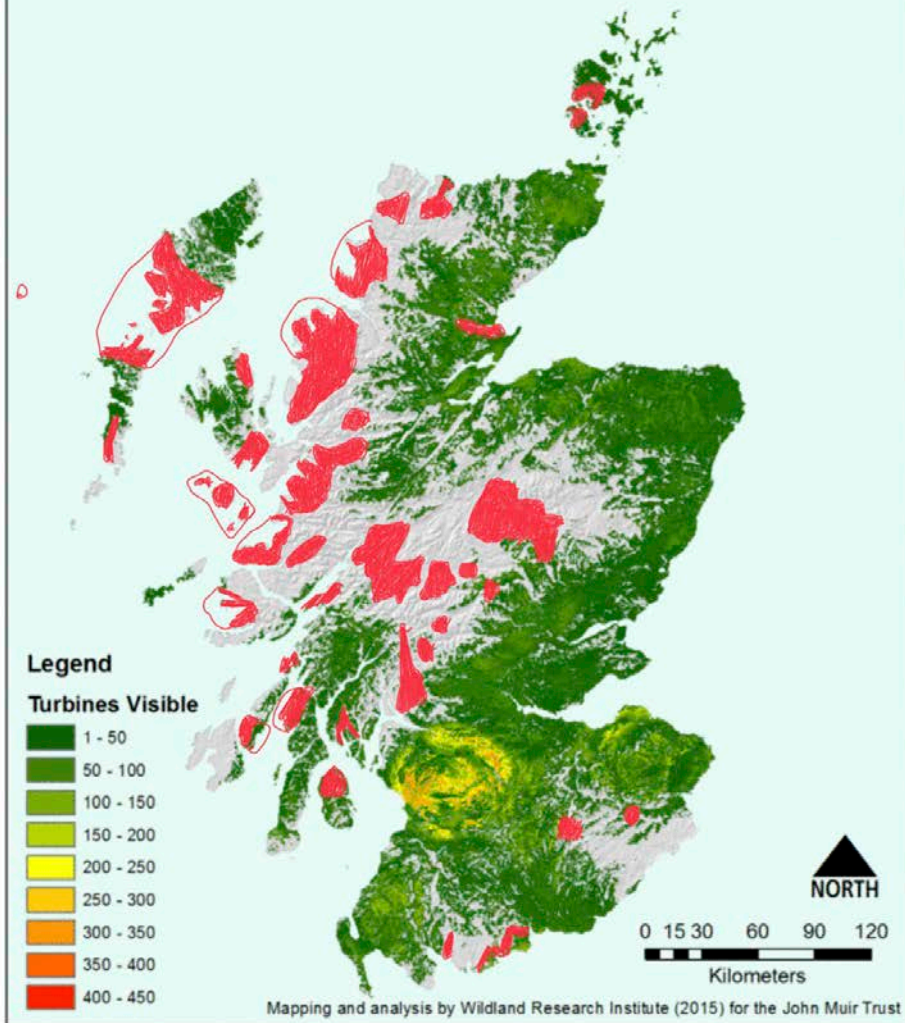
# The spread of wind farms and their visual impact across Scotland over time

1995-2018  
An Animation



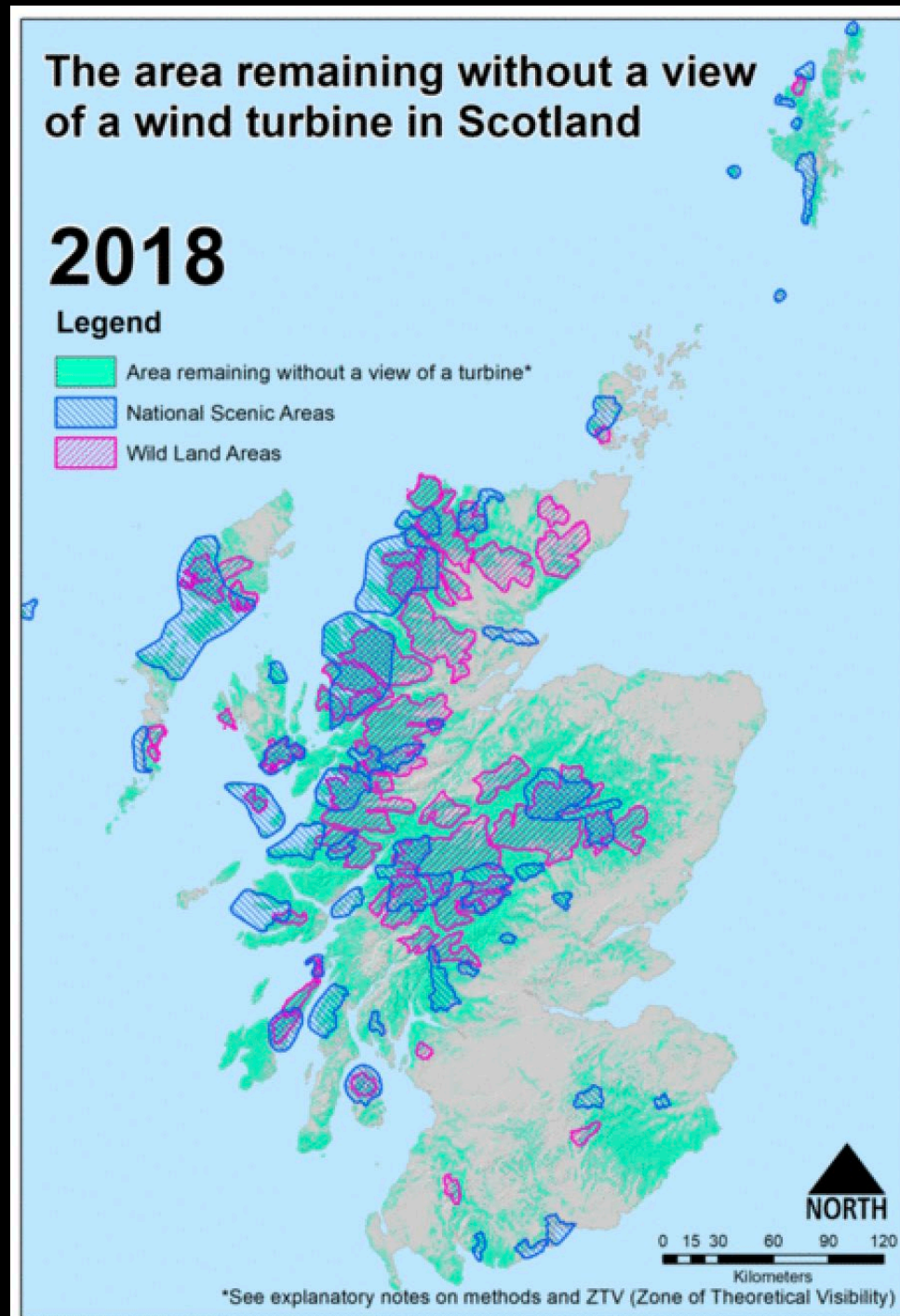
# The spread of wind farms and their visual impact across Scotland over time...

## 2015



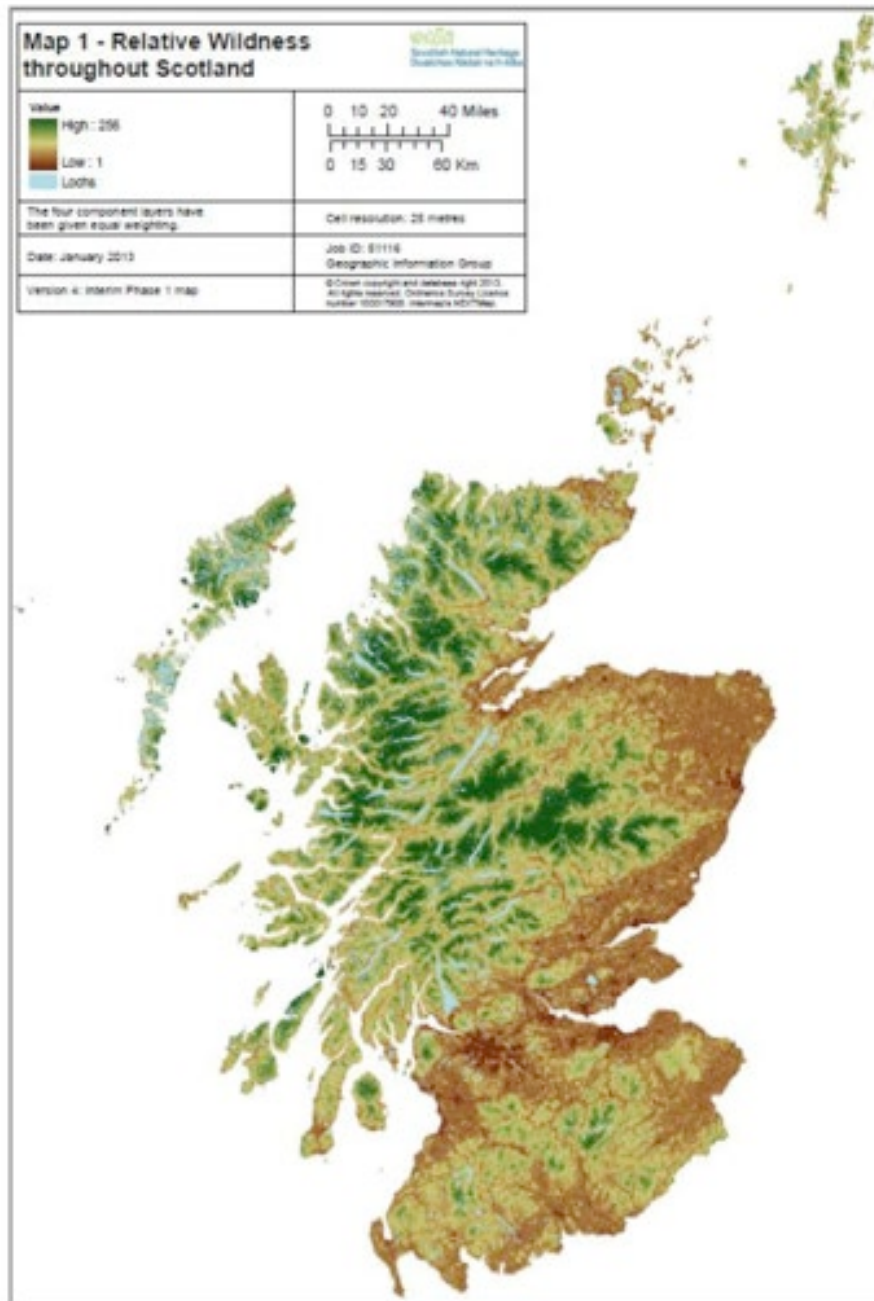
# Windfarms The areas avoided....

(Note: some overlap between NSAs and WAs)



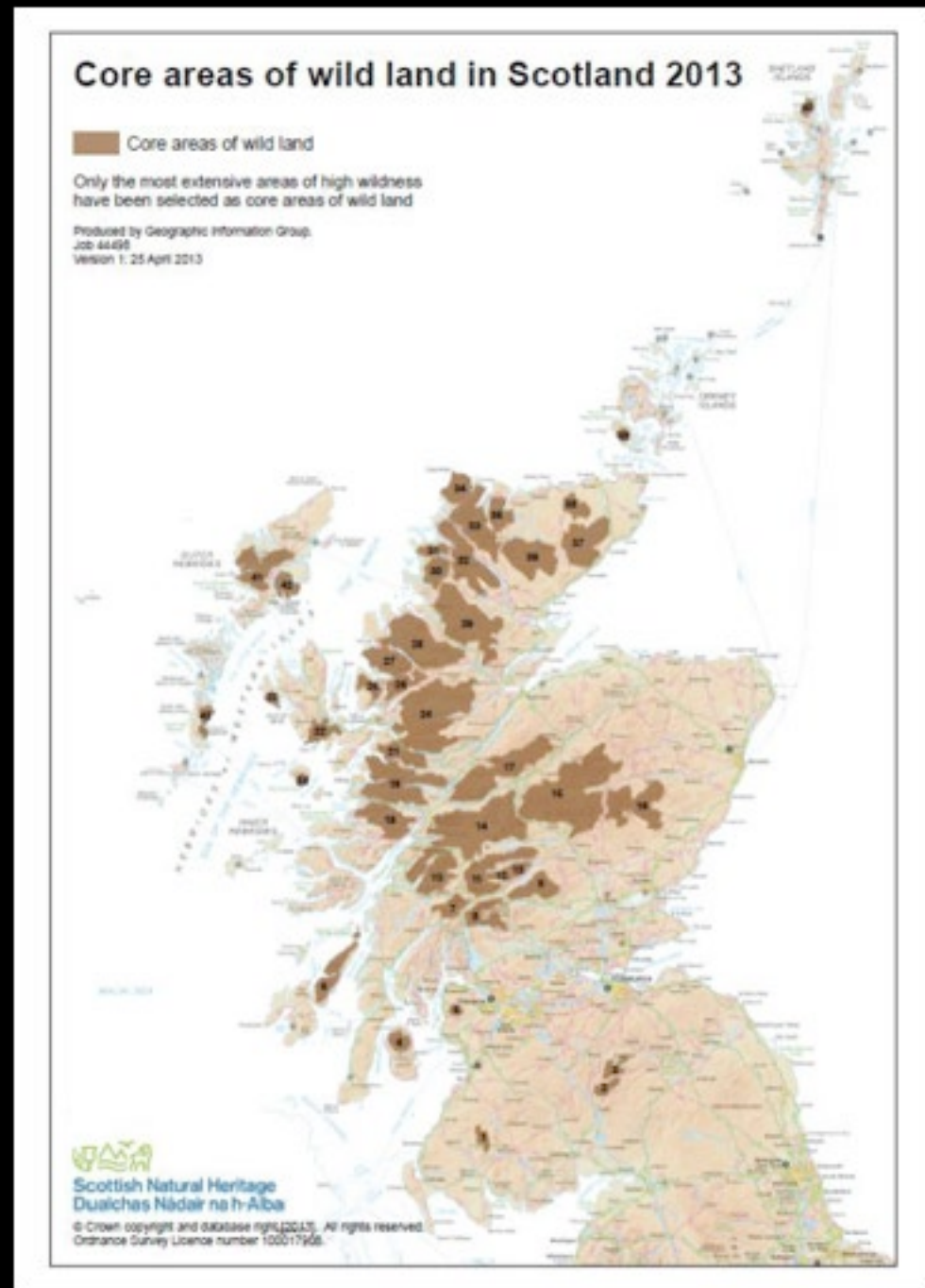


# The Altnaharra Windfarm



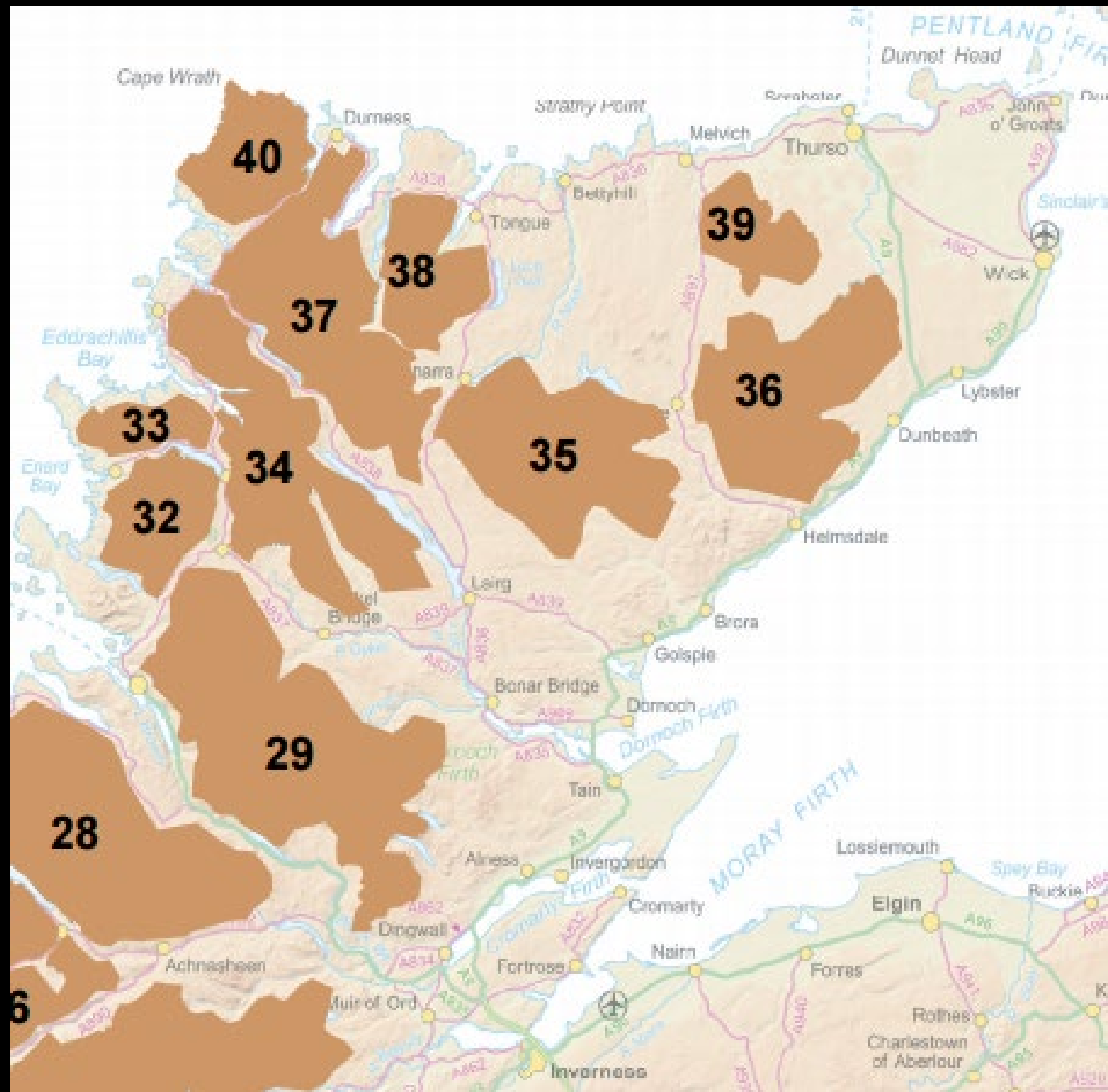
# The Altnaharra Windfarm

## WILDLAND AREAS



# The Altnaharra Windfarm

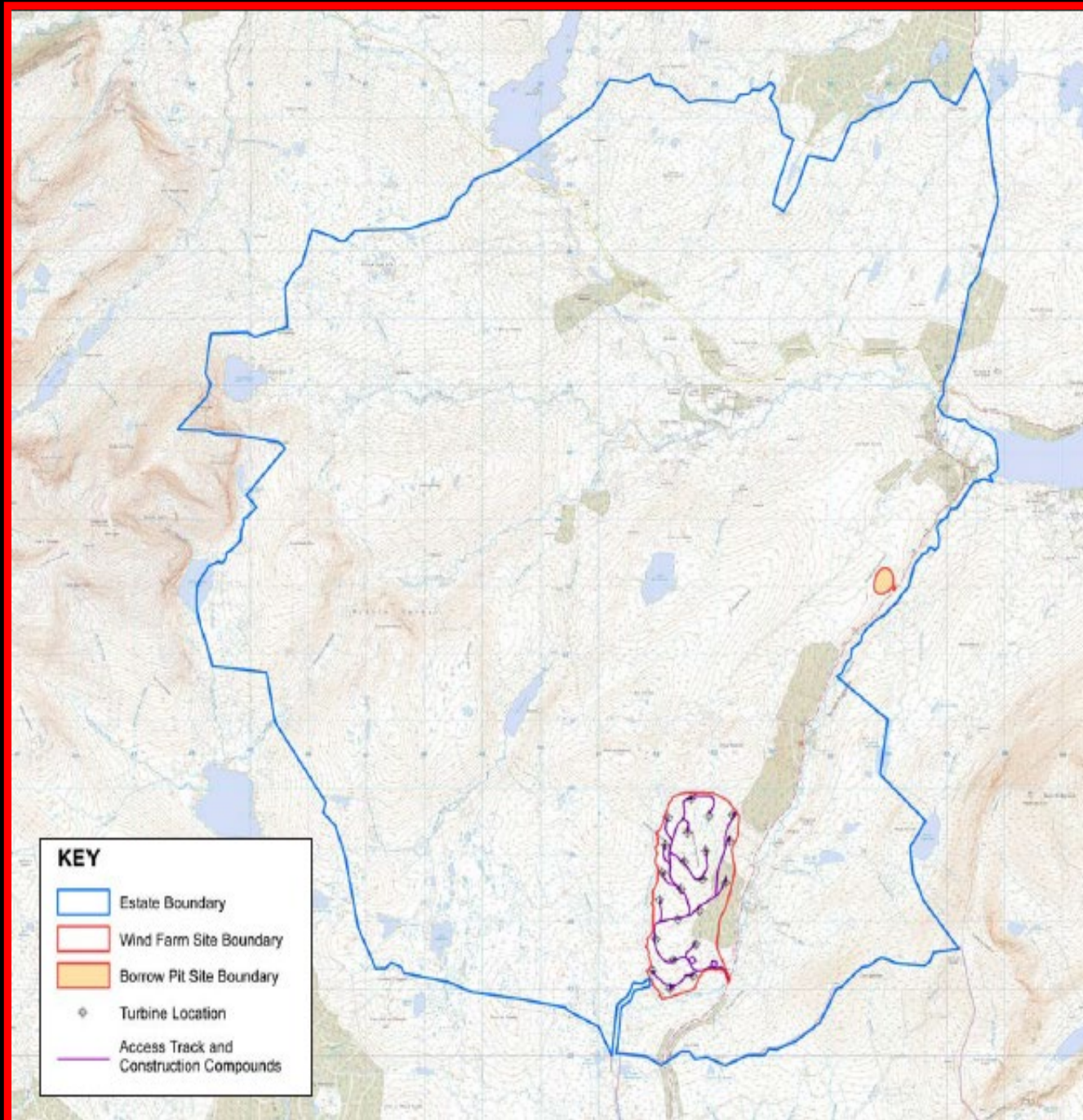
## WILDLAND AREAS



The  
Altnaharra  
Windfarm

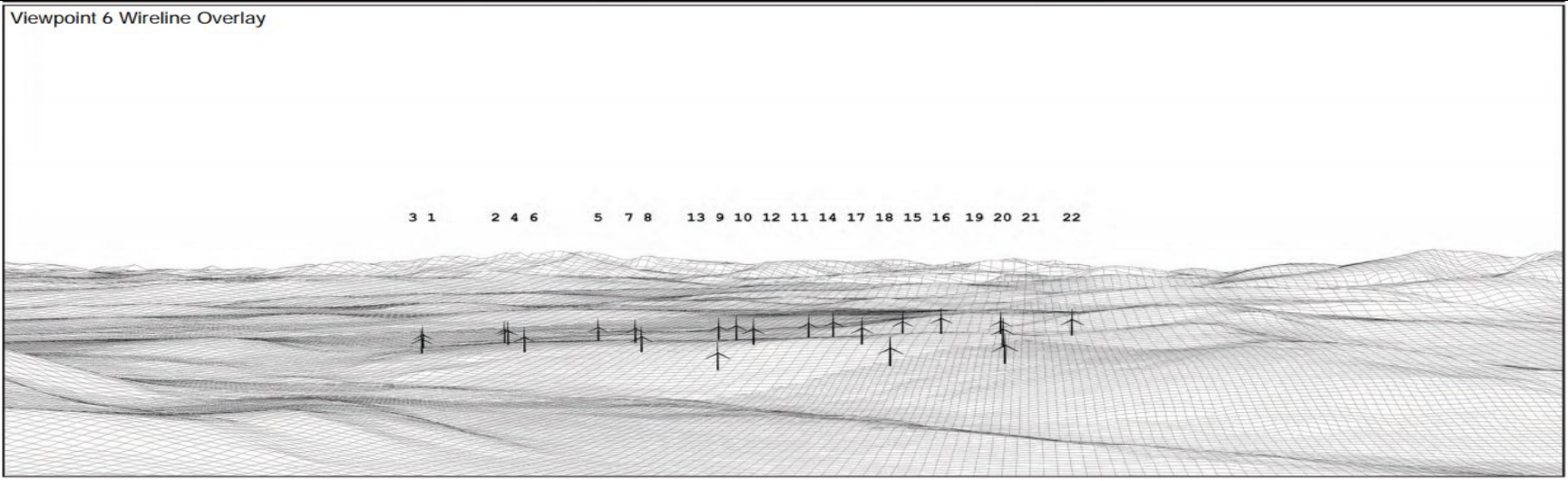
Altnaharra  
Estate

Windfarm  
site





Viewpoint 6 Existing View

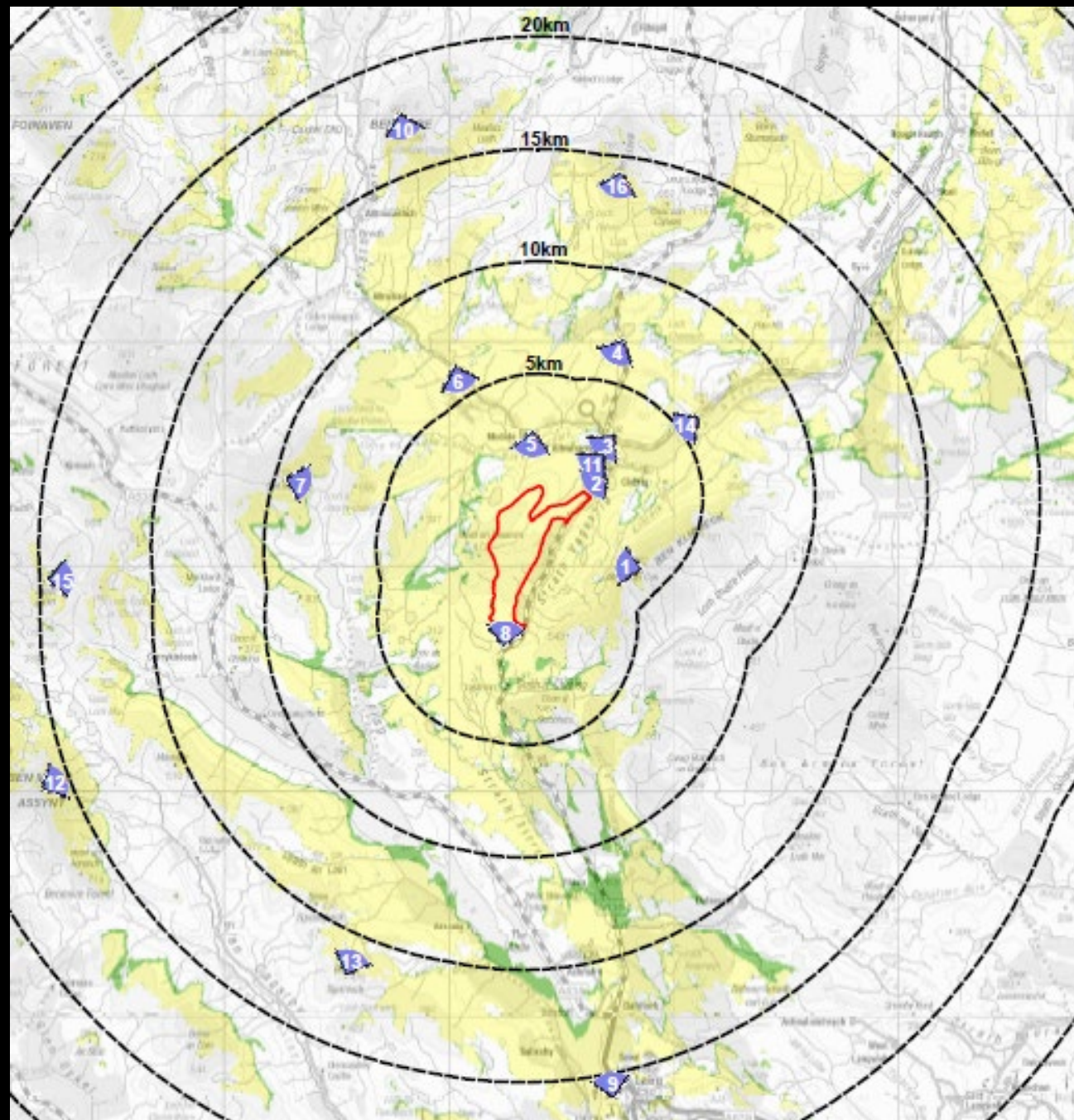


Viewpoint 6 Wireline Overlay

3 1      2 4 6      5 7 8      13 9 10 12 11 14 17 18 15 16 19 20 21 22

# The Altnaharra Windfarm site





VP NO.	VP NAME	EASTING	NORTHING	DISTANCE TO NEAREST TURBINE (KM)	RECEPTOR TYPE
1	Ben Klibreck (summit)	258552	929902	T21 @ 4.70	Walkers
2	A836 southbound / National Cycle Network 1 –south of Altnaharra	257006	934187	T30 @ 3.71	Cyclists, road users
3	B873, north of Altnaharra	257325	935868	T30 @ 4.85	Road users
4	A836 southbound / National Cycle Network 1 – south of Loch Staing	257724	940126	T30 @ 8.39	Cyclists, road users
5	Minor road near Mudale	253693	936069	T31 @ 3.09	Road users, residents
6	Minor road / car park, south of Loch Meadie	250155	938937	T29 @ 6.69	Road users
7	Ben Hee (summit)	242646	933934	T27 @ 9.84	Walkers
8	A836 northbound / National Cycle Network 1 – near the Crask	252376	926384	T1 @ 0.91	Cyclists, road users
9	Ferrycroft Visitor Centre, Lairg	257297	906347	T1 @ 21.5	Visitors
10	Ben Hope (summit)	247723	950186	T31 @ 17.85	Walkers
11	Altnaharra / bridge	256832	935085	T30 @ 3.98	Residents
12	Ben More Assynt (summit)	231809	920093	T2 @ 21.73	Walkers
13	Beinn Sgeireach (summit)	245359	911810	T1 @ 16.98	Walkers
14	B 873 westbound / Grummore Caravan site	261076	936676	T30 @ 8.45	Road users, visitors
15	Beinn Leoid (summit)	232060	929394	T18 @ 20.16	Walkers
16	Ben Loyal (south of summit)	257624	947575	T31@15.20	Walkers



# The Altnaharra Windfarm

- Tracks, Tracks, Tracks.....Peat? And Road closures....
- Will there be a new application for larger machines?
- Cumulative Effects?
- Precedents - Glen Shero 'Gael Charn' (refused – c800m) Monadhliath - (built – 720m) Dorenell above Glenfiddich (Built – 620m)
- Subsidies and constraint payments being tail wagging the dog....

# Aftermath at Craig Riabhach

- Enforcement Case – peat extraction
- Bankrupt contractor
- Sale of site to 3<sup>rd</sup> Party by Gray & Adams; ERG Group Italy
- Connection to grid 20km
- Constraint Payments

## Construction Challenges

- The ERG Group is the leading wind power operator in Italy and among the top ten in Europe, the Group is also active in solar energy production where it ranks in the top five in Italy.
- The haulier is driving the 48m-trailers - with 9m rear projection - on 53-mile journeys from the Port of Nigg to the construction site at Altnaharra Estate, near Lairg in the North Highlands, modifying the route for the safe passage of the 57m blades, the longest of the components.
- To enable the connection of the Creag Riabhach Wind Farm, SSE are proposing to construct a new 132kV overhead line, approximately 20km in length

See video of construction



# The Altnaharra Windfarm & Wildland

- Highland Council case page
- <http://wam.highland.gov.uk/wam/applicationDetails.do?activeTab=documents&keyVal=MYTYIGIH09500>
- Court of Session Decision
- <http://www.scotcourts.gov.uk/docs/default-source/cos-general-docs/pdf-docs-for-opinions/2017csoh113.pdf?sfvrsn=0>





Approaching the summit Ben Hope





# NPF4

Adopted by the  
Scottish Ministers  
on 13 Feb 2023



NPF4 : Updated policies on green energy support renewable energy development other than in national parks and national scenic areas, subject to an assessment of their impacts on a case by case basis. Repowering of wind farms, small scale generation, negative emissions technologies and solar energy should be supported. Criteria for assessing proposals are set out.

## Wild Land: Policy 4 notes:

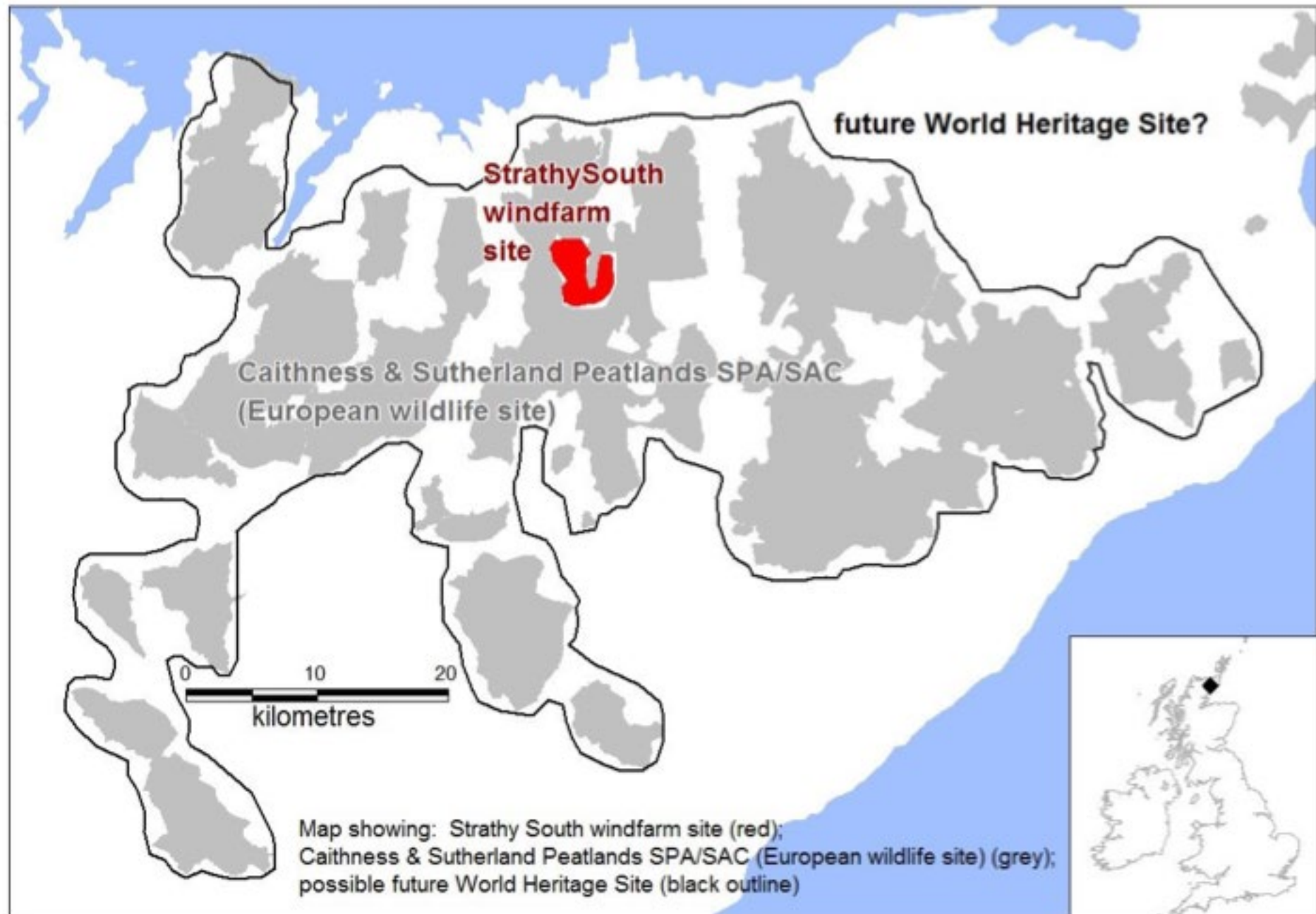
- Renewable energy development in Wild Land Areas will be supported where the proposal “*will support meeting renewable energy targets*”
- Subject to an appropriate impact assessment and if necessary, mitigations.
- Wild Land Assessments are now also only considered to be required for areas within WLAs. [Atmos]

## Landscape:

- Landscape and visual policies show a marked change in approach and intent from NPF3
- Policy 11 recognises the necessary impact from renewable developments, while noting these are likely to be deemed **acceptable** with the application of appropriate design mitigation.
- During the planning stage there will be an increased need for emphasis on the overall design development process.  
[Atmos]

## Peatland: Policy 5

- development proposals on peatland, carbon-rich soils and priority peatland habitat will only be supported for the generation of energy from renewable sources that optimises the contribution of the area to greenhouse gas emissions reductions targets
- Proposals will require a detailed assessment of the peat and the likely net effects on climate emissions and loss of carbon.
- Development design will be required to follow the mitigation hierarchy, be in accordance with guidance and consider other appropriate plans required for restoring and/ or enhancing the site into a functioning peatland system capable of achieving carbon sequestration. [Atmos]



See video of Stathy Wall









# Kyle of Tongue from summit Ben Hope



# Wild places and communities



Mike Daniels

Head of Policy

John Muir Trust

- Jobs vs wild places
- Conservation *and* communities
- Incentives *and* regulation
- National parks

# Jobs vs environment



JOHN  
MUIR  
TRUST

EST. 1983

News > UK > Home News

## Scottish village could reap £200 million reward after gold mining plans go ahead

Although gold was found in 1980s, project was abandoned after running into financial difficulties

Rose Troup Buchanan • Saturday 24 January 2015 17:58 GMT • [Comments](#)



## HPMAs: Fergus Ewing rips up consultation

2nd May

FERGUS EWING

HOLYROOD

HPMAS

SCOTTISH GOVERNMENT

SNP

NATIONAL



Fergus Ewing said he had never seen such a backlash to a policy in almost half a century  
(Image: NQ)

# Climate change and renewable energy

## Energy / Yell wind farm given green light by government

Statkraft hopes to start construction on the Energy Isles wind farm by 2025



Chris Cope  
2 October 2023 16:00



## Building wind farms on peatlands could undermine green transition

Since 2008, at least 79 wind turbines have been built in Ireland on recognised blanket bog, the long-term impact of which is not fully understood.



Stephen Robb

NEWS > NEWS

24 May 2023



# Conservation *and* communities



JOHN  
MUIR  
TRUST

EST. 1983

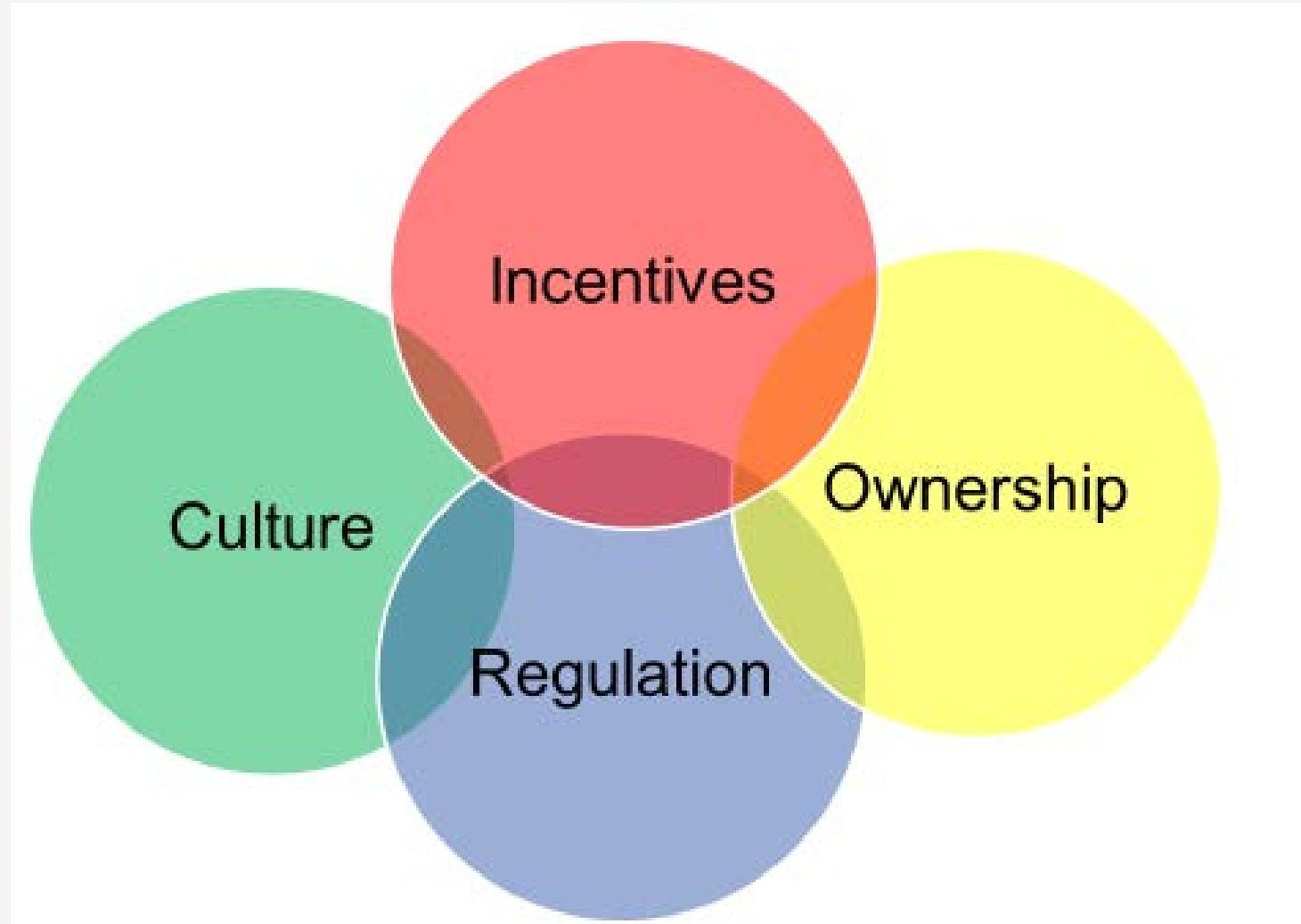


## TARRAS VALLEY NATURE RESERVE

One of the most ambitious community projects  
of a generation



# Land use change



# Regulation – nudge behaviour



JOHN  
MUIR  
TRUST

EST. 1983



It's time for a Carbon Emissions Land Tax



# National parks



News ▸ Local News ▸ Dumfries News

## Galloway prepares its bid as nominations open for Scotland's new national parks

Campaign groups and communities have been invited to explain to Scottish Ministers why their bid should be

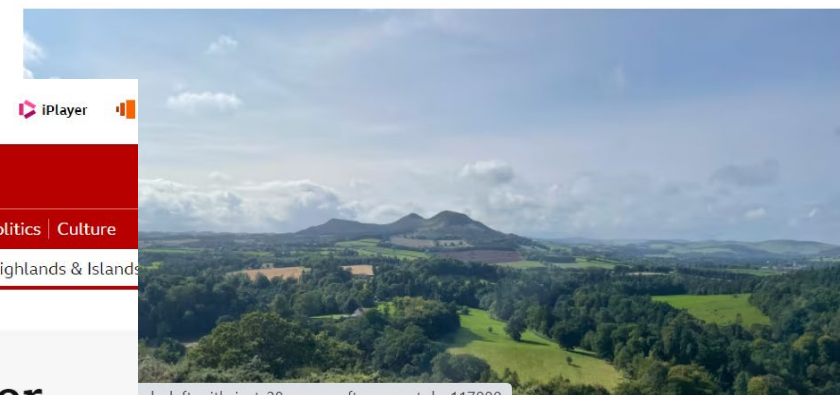
NEWS By Stephen Norris  
07:22, 19 OCT 2023

Bookmark



## Scottish Borders and Dumfries and Galloway bid for national park status

BORDER | SCOTTISH BORDERS | DUMFRIES AND GALLOWAY | NATIONAL PARKS  
Sunday 15 October 2023 at 4:56pm



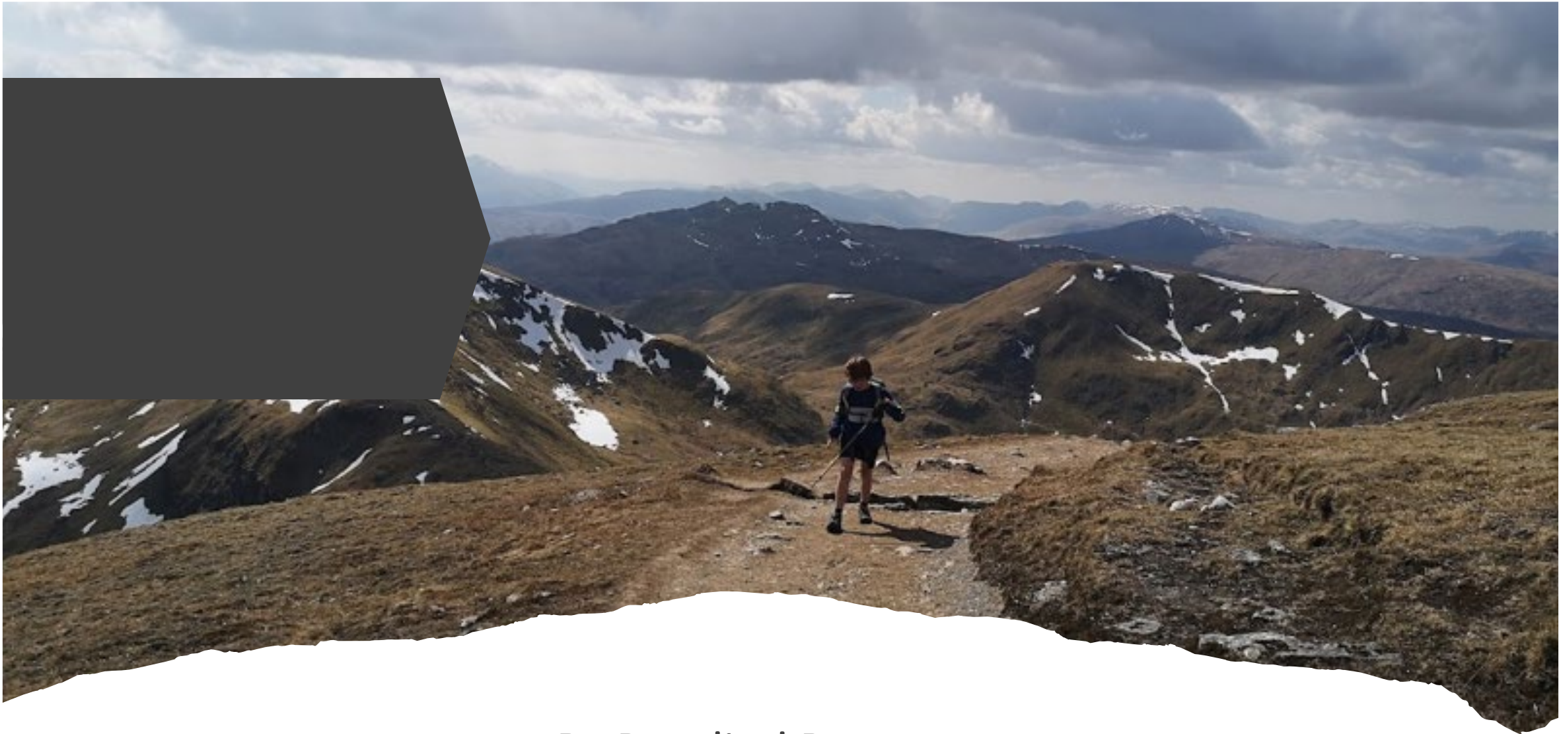
BBC Your account Home News Sport Weather iPlayer

### NEWS

Home | Israel-Gaza war | Cost of Living | War in Ukraine | Climate | UK | World | Business | Politics | Culture  
Scotland | Scotland Politics | Scotland Business | Edinburgh, Fife & East | Glasgow & West | Highlands & Islands  
Alba | Local News

## National park status suggested for Isle of Skye





Dr Rosalind Bryce  
Centre for Mountain Studies

**UHI | PERTH**

# Mountains and uplands face a contested future

---

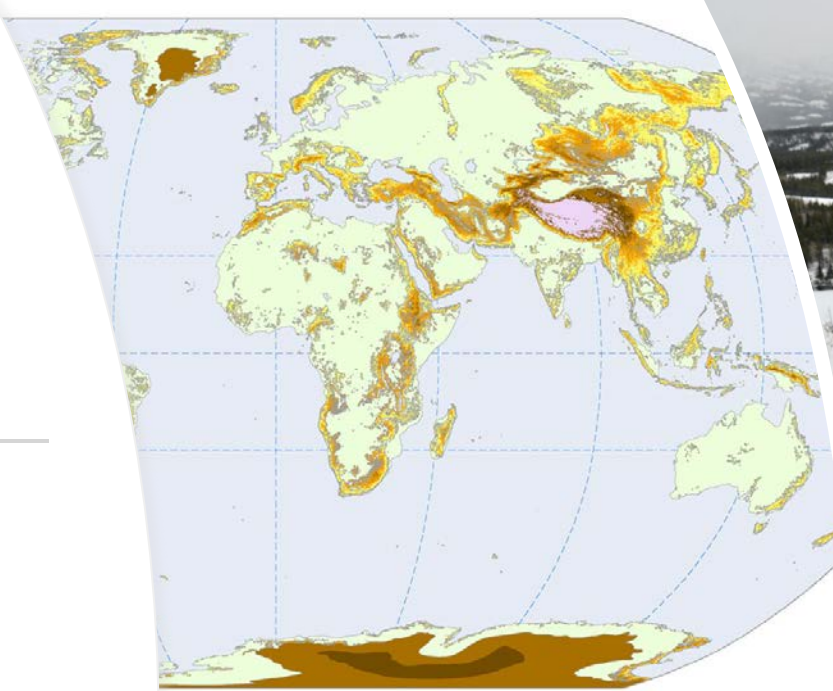
- Interdisciplinary and applied research: social, ecological, cultural
- Education and training
- Knowledge exchange e.g. 'Challenging Upland Futures' forum



# Centre for Mountain Studies – Research themes

---

- Land and Communities
- Global Mountain Sustainability
- Upland Culture
- Wellbeing and climate action



# Teaching Mountains

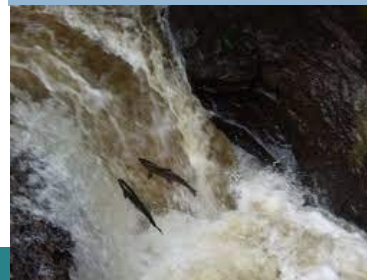
MSc in Sustainable Mountain Development

Continuing Professional Development

Sustainable Deer Management



Sustainable Water Management



## MSc Sustainable Mountain Development

A unique part-time, online course

Do you want to understand and make a real difference towards the sustainability of mountain regions? If you are working in, or are interested in mountain areas, this course is ideal.

### You can:

- Study entirely online, when and where it suits you
- Learn from experts in sustainability across the University of the Highlands and Islands
- Study modules that consider social, environmental and economic development
- Exit with a PgCert, PgDip or MSc

Eligible Scottish students studying the full MSc can apply for a tuition fee loan from SAAS: [www.saas.gov.uk](http://www.saas.gov.uk)



Photo: Neil McIntyre

Stand-alone Continuing Professional Development Awards in Sustainable Deer Management and Water Management are available

To apply now or for more information visit:  
[www.perth.uhi.ac.uk/mountainstudies](http://www.perth.uhi.ac.uk/mountainstudies)

or contact the Centre for Mountain Studies, Perth College UHI:  
[info.cms@perth.uhi.ac.uk](mailto:info.cms@perth.uhi.ac.uk);  
or call **01738 877761**



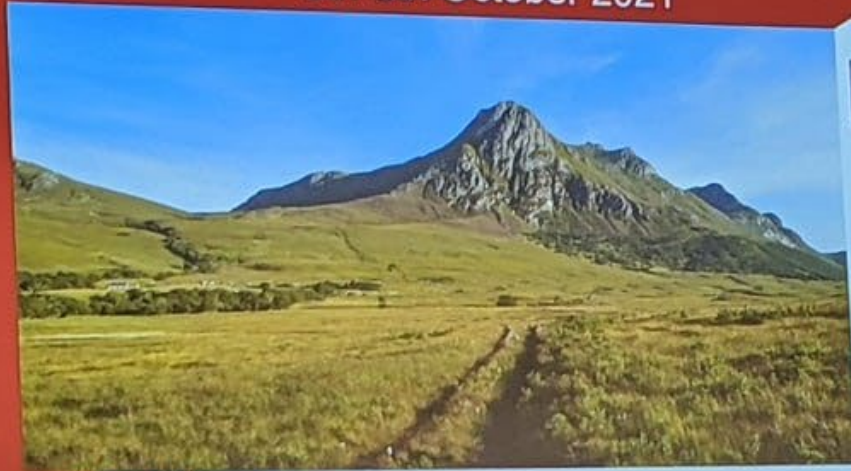
# Managing Scotland's uplands

Scotland's uplands have a distinct pattern of land ownership, with associated land management practices.

Our research analyses a range of land management challenges, with a particular focus on sustainable land use and the linkages between management decisions and socio-economic impacts

# Challenging Upland Futures

5th-6th October 2021



Royal  
Scottish  
Geographical  
Society

scrr

Scottish Consortium  
for Rural Research  
www.scrr.ac.uk



University of the  
Highlands and Islands  
Perth College

Centre for  
Mountain Studies

#ChallengingUplandFutures



# Diverse stakeholder perspectives





# Key actions

Addressing climate change and biodiversity objectives in upland initiatives



Weighting priorities and taking integrated approach based on landscape characteristics

Finding optimum spatial scales to deliver benefits in the uplands and for integrating policies



Long term approaches needed at regional and national scale

Good practice community engagement in the uplands



Youth and skills development – build upskilling programmes into projects (e.g. habitat restoration)

Contributions of the uplands to a Just Transition



Support for industries that sustain livelihoods including tourism, agriculture and renewable energy generation – distribution of resources and benefits

# Almond headwaters - Riverwoods: nature recovery and green finance

Exploring how community engagement can contribute to effective green finance models that can enhance biodiversity and provide opportunity for community agency



## Almond Headwaters - Riverwoods



Perth and Kinross  
COUNTRYSIDE  
TRUST



Esmée  
Fairbairn  
FOUNDATION



Perthshire  
nature  
connections  
Partnership



RIVERWOODS

# Connect Outdoors partnership



Developing ways of monitoring and evaluating the outcomes of the programme:

Understanding participant experience:

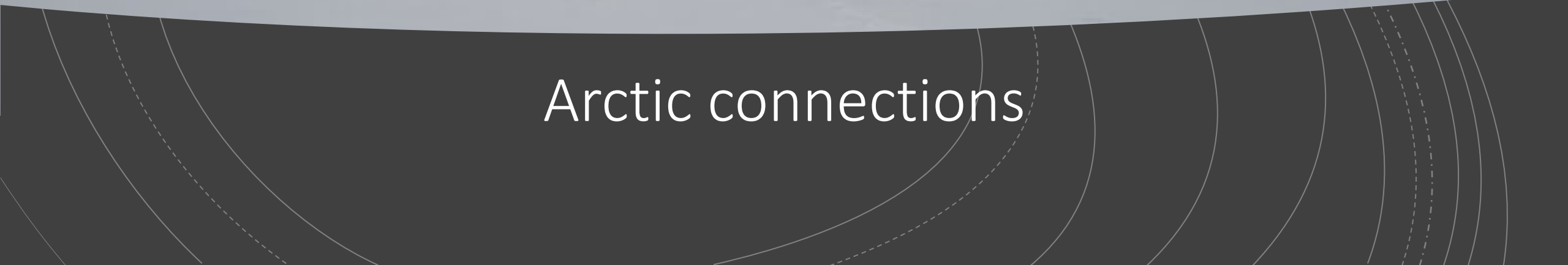
- Social benefits
- Learning and skills development
- Understanding of natural environments
- Benefits for physical health and mental wellbeing

Potential project impact:

- Programmes delivered to different groups
- Future delivery as health intervention (green prescribing)



# Arctic connections





## Main themes:

- ♥ Responsible tourism
- ♥ Branding
- ♥ Training (guides)
- ♥ Local products (*e.g. wool*)
- ♥ Creating trails that link cultural and natural assets
- ♥ Destination management planning

# Scientific Tourism

- Partners in **Finland, Iceland, Greenland** and **Scotland**
- Aim is to help small businesses based in remote northern regions to create and promote new knowledge-based products
- Objectives:
  - The development of scientific tourism products
  - A transnational brand identity and marketing campaign
  - An ethos for more immersive, sustainable travel
  - A network to provide information and support and an online space for discussion and knowledge exchange



International partnerships



**CULTIVATE:**  
Co-creating cultural narratives for sustainable  
rural development





## Cultural narratives at different spatial scales

---

Understanding cultural  
narratives at local, regional,  
national and international  
scales: identifying synergies  
and conflicts

# The cultural role of crofting system and woodland envisaged as important for the future of Wester Ross





Thank you

For further information please contact me  
[rosalind.bryce.perth@uhi.ac.uk](mailto:rosalind.bryce.perth@uhi.ac.uk)

[www.perth.uhi.ac.uk/subject-areas/centre-for-mountain-studies/](http://www.perth.uhi.ac.uk/subject-areas/centre-for-mountain-studies/)